



marine
2020

HERTZ
The Sound Experience





HERTZ

Technology Art Sound
Manufactured by
elettromedia
Italy



THE SOUNDTRACK OF YOUR ADVENTURES

marine

**HERTZ MARINE HIGH-PERFORMANCE
CONTROL UNITS, SPEAKERS AND
AMPLIFIERS ARE DESIGNED
TO OPERATE IN THE MARINE
ENVIRONMENT, THRILLING YOU WITH
THE EMOTIONS OF MUSIC WHILE
ENJOYING BOATING**

Since 1998, Hertz has developed in Italy world-class speakers, amplifiers and DSP for the 12 V industry, focused on reaching the best performance in the real environment of application. Passion for audio entertainment is the essential driving force leading the Hertz engineers to win the never-ending challenge of innovation using the most advanced technologies, always.

Hertz products, highly regarded in over 60 countries worldwide, received several awards from EISA and other leader organizations for its outstanding track record of unique products.

To support its fans and sea lovers, in 2014 Hertz launched the Marine program, bringing the "Hertz Sound Experience" to open water.

HERTZ PRODUCTS DESIGN ORIGINATES FROM THE UNIQUE **ITALIAN** MARINE LIFE-STYLE

The Conero Riviera, Marche,
Italy - Just 10 miles away
from Hertz Headquarters



marine

MAKE EVERY CRUISE
MEMORABLE WITH
HERTZ MARINE



MARINE GRADE SOURCE UNITS

Engineered to maximize fun on board with an exclusive design, Hertz Marine control units are the ultimate solution for high fidelity on open water, thanks to extended connectivity and user-friendly Marine functions.

PREMIUM CLASS TOWERS

Developed to deliver emotions during water sports sessions, Hertz Marine Towers will light up your parties overwhelming you with a detailed high-output sound and an exclusive color lighting experience, making your special events unique.

HIGH-PERFORMANCE SPEAKERS

Hertz Marine speakers will thrill you with unlimited emotions, preserving their astonishing performance season after season. The ultra-complete range features a wide array of grilles, colors and sizes, to satisfy every installation need. Last but not least, Hertz Marine subwoofers will complete the low-end reproduction with outstanding output enhancing your cruising experience.

HIGH-POWER AMPLIFIERS

Hertz Marine amplifiers are made to withstand the hard life on board, delivering premium audio quality even with the most demanding installation, thanks to built-in DSP and the unmatched power-to-size ratio.

POWER FOR THE WAVES PURE MARINE CERTIFIED PRODUCT

HERTZ MARINE PRODUCTS ARE READY TO SAIL AND DESIGNED TO LAST, BEING ENGINEERED BY A DEDICATED R&D TEAM USING IN-HOUSE DEVELOPED SOFTWARES AND ENDURANCE TESTED TO FACE THE HARDEST CONDITIONS THAT CAN BE FOUND IN OPEN WATER



WATER JET
RESISTANT

WATER JET RESISTANT

The protection grade IP64 for amplifiers, IP65 for speakers and IP66 for source units define all the Hertz Pure Marine Certified products as totally protected against water jets of different entities, making them highly performant in the marine environment.



VIBRATION
PROOF

VIBRATION PROOF

"You can't cross the sea merely by standing and staring at the water" - Rabindranath Tagore. This is why we stress our Marine products with severe vibration tests to simulate the worst offshore conditions, always ensuring full operability.



DUST
INTRUSION
RESISTANT

DUST INTRUSION RESISTANT

Dust intrusion is an important factor to handle in order to preserve the unique level of performance ensured by our Marine products for a long time. This is why they are totally protected against the intrusion of solid parts.



HUMIDITY
RESISTANT

HUMIDITY RESISTANT

High humidity is the default condition that marine electronics and speakers have to face 99% of the time. To prevent any mechanical end electronic failure, Hertz Pure Marine Certified products are subjected to severe stress tests to take them to the limit.



UV
RESISTANT

UV RESISTANT

According to the severe ASTM-D4329 standards for UV resistance, all the materials used for Hertz Marine products are designed to face long time exposition to UV radiations while cruising on the open sea.



SALT FOG
PROOF

SALT FOG PROOF

To satisfy the standards required by ASTM-B117, Hertz Marine products are tested with massive salt fog spray to ensure a complete resistance to corrosion, typical of this atmospheric agent.



THERMAL
SHOCK
RESISTANT

THERMAL SHOCK RESISTANT

High quality ASA plastic and Polypropylene cones with co-molded Santoprene surround guarantee resistance to a wide range of temperatures.



STAINLESS
HARDWARE

STAINLESS HARDWARE

Stainless hardware is unbeatable against rust and corrosion, preserving Hertz Marine speakers and electronics from degradation over time due to exposure to nature.



CORROSION
RESISTANT

CORROSION RESISTANT

Electronics components corrosion caused by exposure in wet environments is totally neutralized by the use of dedicated marine-grade (epoxy coated) PCB boards.



POWER
FOR THE **WAVES**
PURE MARINE
CERTIFIED PRODUCT

SOURCE UNITS



200W
MOFSET POWER
50 W X 4

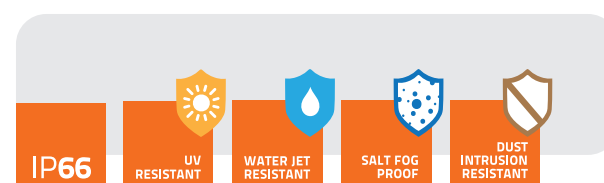
HMR 50

DIGITAL MEDIA RECEIVER

ENGINEERED TO MAXIMIZE FUN ON-BOARD
HMR 50 IS THE ULTIMATE SOLUTION FOR OPEN
WATER ENTERTAINMENT

PURE MARINE DESIGN

HMR 50 features IP66 protection grade, ASTM-D4329 standards for UV resistance and ASTM-B117 for salt fog operability, giving you unstopped pleasure season after season.



KEY FEATURES

- 3.5" IPS DISPLAY** The large 3.5" full color TFT IPS display remains visible even during daytime navigation and the big buttons make it easy operating while cruising.
- PARTY MODE** Just push the dedicated button to play your source at the same volume in the whole vessel, transforming your boat into a dance floor.
- BATTERY VOLTAGE GAUGE** Voltage indicator to check-up battery status

- 3 ZONE** HMR 50 features 3 pairs of stereo outputs providing the ability to create 3 independently controlled listening areas (FLYBRIDGE, AFT DECK, CABIN) to obtain the perfect sound everywhere.
- MULTI COLOR** Multicolor backlight for a perfect match with cockpit lighting.
- 8 BAND EQ** The powerful 8 band digital equalizer will support you finding the best sound.



CONNECTIVITY



The dedicated control App (for Apple/Android) enhances the user experience, making the sound fine tuning and music files navigation a breeze.



HMC D1 OPTIONAL REMOTE CONTROL

HMC D1 allows to replicate every function of the main unit in every place of the boat you desire, maximizing the onboard comfort.

UNPARELLED PERFORMANCE WITH ANY SOURCE

HMR 50 advanced connectivity includes DAB+ Ready™, SiriusXM-Ready™, Bluetooth APTX (CD Audio quality), USB 2.0 port (iPad/iPhone control) a to convert your deck in a real multimedia environment. The FM (RDS for EU)/AM PLL radio with Marine Weather Band completes the standard equipment.



IPX7

HMC U1 OPTIONAL REMOTE CONTROL

Play your favorite song and pump-up the volume while swimming in open water. Thanks to IPX7 certification you can install HMC U1 remote control freely anywhere on the boat, adding fun to every cruise.

POWER
FOR THE **WAVES**
PURE MARINE
CERTIFIED PRODUCT

SOURCE UNITS



200W
MOFSET POWER
50 W X 4

HMR 20

DIGITAL MEDIA RECEIVER

DESIGNED TO WITHSTAND THE MOST EXTREME MARINE CONDITIONS, HMR 20 WILL BECOME YOUR TRUSTED FRIEND ON EVERY CRUISE

HMR 20 turn every cruise into an exciting adventure bringing the music of your favorite artist to open water. The powerful (RDS)/AM PLL radio and the extended connectivity powered by DAB+ Ready, Bluetooth audio streaming and USB 2.0 port will liven up your trip with tons of musical contents.

SOURCE UNITS

HERTZ



200W
MOFSET POWER
50 W X 4

HMR 10 D - HMR 10

DIGITAL MEDIA RECEIVER

PERFECT SOUND ONBOARD WITH A GAUGE-STYLE INSTALLATION

With two pairs of high quality stereo outputs, a screen readable at all times and a generous marine-grade control panel, it will be a breeze to control your favorite playlist on USB or Bluetooth® streaming for maximum fun in water. D option provides additional DAB + compatibility to listen to your favorite radio stations with unmatched audio quality.

KEY FEATURES

- 3" IPS DISPLAY** The large 3" full color TFT IPS display remains visible even during daytime navigation and the big buttons make it easy operating while cruising.
- MULTI COLOR** Multicolor backlight for a perfect match with cockpit lighting.
- 4 PRESET EQ** Customize the sound with 4 EQ preset created by Hertz audio engineer.
- 2 ZONE** HMR 20 features 2 pairs of stereo outputs providing the ability to create 2 independently controlled listening areas.
- BATTERY VOLTAGE GAUGE** Voltage indicator to check-up battery status

CONNECTIVITY



PURE MARINE DESIGN



HMC U1
OPTIONAL REMOTE CONTROL

KEY FEATURES

- 3 PRESET EQ** Customize the sound with 4 EQ preset created by Hertz audio engineer.

CONNECTIVITY



PURE MARINE DESIGN



HMR 10 D



HMR 10



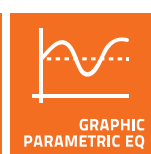
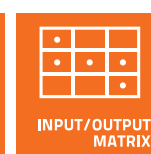
HMC U1
OPTIONAL REMOTE CONTROL



**FEEL THE MAGIC
OF A CONCERT HALL
ANYWHERE
ON THE BOAT**



Hertz marine dsp technology
allows you to move freely in
the boat preserving a perfect
surround effect.

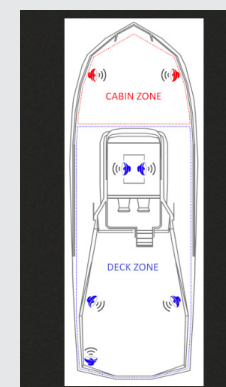


Hertz Marine DSP optimizes acoustic performance
for each of the 3 configurable listening zones,
regardless the speakers location and the
passenger position, maximizing the listening
experience.

Each speaker in the system can be fine-tuned
with an equalization, a crossover filter and time
delays to exploit its maximum potential.



Hertz Navigator software allow to create pre-optimized
software setup files for a specific boat model and
the related audio system installed, ensuring a correct
acoustic result in a very short time.



POWER
FOR THE WAVES
PURE MARINE
CERTIFIED PRODUCT

HIGH-POWER AMPLIFIERS

12/24V
VERSION
AVAILABLE

DSP
marine



130W x 8Ch

D-CLASS
MAX POWER

HMD8 DSP

8 Ch MARINE AMPLIFIER WITH DSP

ADC
ADVANCED D-CLASS

Thanks to the Hertz advanced D-CLASS output stage, HMD8 DSP joins maximum sound quality with unmatched efficiency to be very compact and easily installed anywhere in the boat.

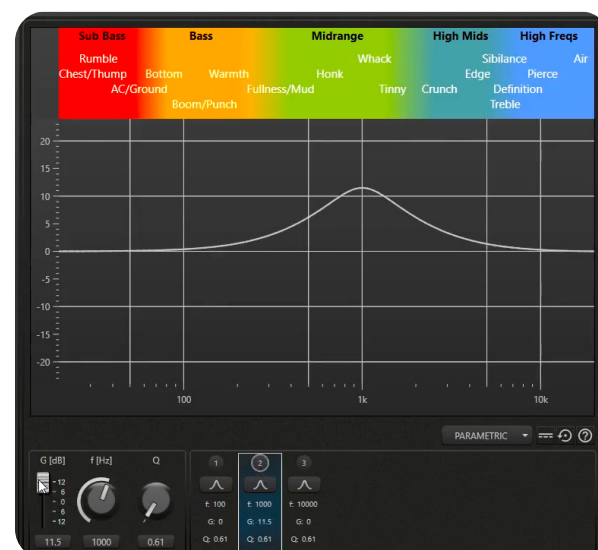


The HMD8 DSP, powered by Hertz Marine DSP technology, reach new heights of listening pleasure. DSP user friendly PC-Software interface makes the setup process a breeze, exploiting every single pills of performance from the installed speaker system. The amazing power of 8 x 85 W or 4 x 260 W (RMS@ 4Ω) gives the HMD8 DSP the capability to drive with authority the complete speaker system generating tons of crystal clear SPL up to 3 different zone of the vessel.

HERTZ MARINE DSP TECHNOLOGY



KEY FEATURES



HIGH-POWER AMPLIFIERS

12/24V
VERSION
AVAILABLE

HERTZ



2000W

D-CLASS
MAX POWER

HMD1

HIGH POWER MONO AMPLIFIER

ADC
ADVANCED D-CLASS

Hertz advanced D-CLASS output stage ensures pure listening pleasure while keeping a compact size with unmatched power efficiency.



HMD1 mono amplifier is the perfect solution to add one or more marine subwoofer to your vessel, being the ideal power extension of HMD8 DSP. At 1 Ohm it is stable and can supply up to 800 W of power with extremely compact dimension.

KEY FEATURES



POWER
FOR THE **WAVES**
PURE MARINE
CERTIFIED PRODUCT

HIGH-PERFORMANCE SPEAKERS



HMX

HMX coxials are engineered to operate in open water, pleasing you with the incomparable emotions of music for years on end: the specific ASA plastic grilles and polypropylene cone with co-molded Santoprene surround provide UV resistance according to the severe ASTM-D4329 standards. The Aramid fiber spider with silicone-insulated lead wire ensures durability and constant performance over time. Parts and assembly methods are designed to meet high-humidity marine environments (ASTM-B117 & IP65), ensuring the best audio performance season after season.

- Hertz **Pure Marine Certified Product** stamp featuring the IP65 protection grade, ASTM-D4329 standards for UV resistance and ASTM-B117 for salt fog operability.
- 1.4" Neodymium magnet tweeter featuring a PEI material dome combined with faceplate and acoustic lens optimized for best off-axis dispersion and highest SPL.
- Sound-transparent stainless-steel tweeter mesh grille providing efficient high frequency transfer, eye catching look and a rock-solid protection.
- Long-throw 25mm (1") voice coil woofer fine-tuned for infinite baffle applications.
- Sealed built-in crossover with resettable solid-state tweeter protection circuit.
- Gold-plated corrosion resistant terminals.

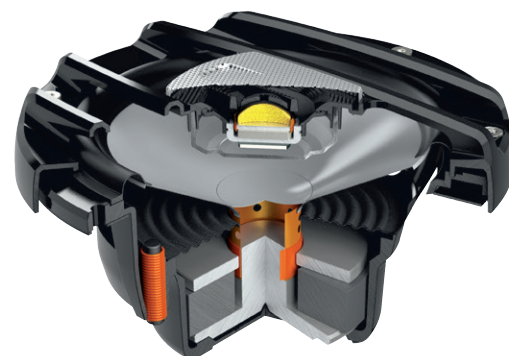
LED LIGHTING OPTION

HMX coxials are all available with RGB LEDs option (LD) featuring a lighting circuit integrated under the grille, protected by a Polypropylene transparent cover acting as light diffuser. Using the optional HM RGB 1 BK remote control you can change the LED color to suit your mood or craft, boosting your party to a different level!



HM RGB 1 BK
Optional Rgb
Remote Control

HM RGB 1 BK is composed by an RGB CONTROLLER specifically developed for LEDs option models including a radio frequency remote control with a wide array of functionalities ranging from the selection of the color better matching your boat/ATV/motorcycle to the creation of a lighting game reacting to music tempo.



IP65



HIGH-PERFORMANCE SPEAKERS

HERTZ



150W
POWER
HANDLING

HMX 6.5
6.5" Marine Coax White
HMX 6.5-LD
Rgb Leds 6.5" Marine
Coax White



150W
POWER
HANDLING

HMX 6.5-C
6.5" Marine Coax Black
HMX 6.5 LD-C
Rgb Leds 6.5" Marine
Coax Black



200W
POWER
HANDLING

HMX 8
8" Marine Coax White
HMX 8-LD
Rgb Leds 8" Marine
Coax White



200W
POWER
HANDLING

HMX 8-C
8" Marine Coax Black
HMX 8 LD-C
Rgb Leds 8" Marine
Coax Black



POWER
FOR THE **WAVES**
PURE MARINE
CERTIFIED PRODUCT

PREMIUM CLASS TOWERS



HTX

Are you ready to enjoy your favorite track at high output level during your daily water ski session? Hertz Marine Towers, available with Clamp & Flat mounting options, developed for installations where compactness is required, will make your sport and leisure outings unforgettable, thanks to impressive audio performance and cool color lighting. Hertz Marine Tower are equipped with dedicated 8" coaxial speaker featuring a long-throw 32 mm (1.26") voice coil woofer with polypropylene cone injected with UV inhibitors and 1.4" Neodymium magnet tweeter, ensuring impressive audio performance.



Discover
Adjustable
logo



Discover
Q-OS² Quick
Orientation



Discover
Q-OS² Quick
Release



Enclosure and grilles are made of High-Impact & UV-resistant ASA polymer for the best durability under severe environmental conditions.

The solid 316-Stainless steel clamp mounting is ideal for Round or Square profile pipe applications where sound needs to be easily oriented and quickly released. This is possible thanks to Q-OS² (Quick Orientation & Release for Sound & Safety) patent pending technology.

IP65



UV
RESISTANT



WATER JET
RESISTANT



SALT FOG
PROOF

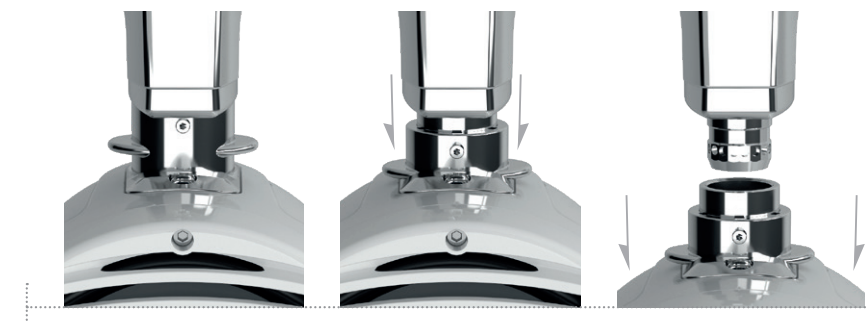


PREMIUM CLASS TOWERS

HERTZ

Q-OS² QUICK RELEASE TECHNOLOGY

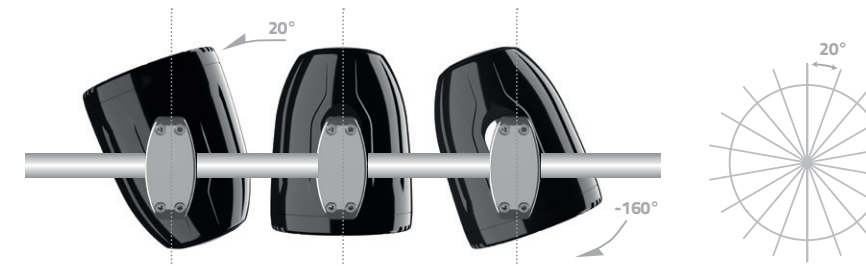
- Quick Mechanical/Electrical release for security/anti-theft and cleaning;
- Multi-pole high current connection self-contained into the clamp structure;
- Clamp structure includes rubber inserts for vibrations damping and fits both round roll-bar [38 mm, 76 mm (1-1/2" to 3")] and square roll-bar or roof mounting by detaching clamp basement upper part. Optional fitting accessories available for major OEM brands.



Q-OS² QUICK ORIENTATION TECHNOLOGY

This innovative design encompasses all the requirements for tower clamping such as:

- Durability thanks to the solid 316 Stainless Steel construction;
- Tower can be quickly oriented within 18 steps (20° each) along horizontal axis for best sound projection and diffusion over the listening area;



ADJUSTABLE LOGO

"Adjustable logo" allows for several tower positioning without affecting the correct Hertz logo orientation. Front and rear logo can be oriented within 64 steps.

Logo Position orientation



PREMIUM CLASS TOWERS



200W
POWER
HANDLING

HTX 8 M-CL-W
Marine Tower Coax 8"
Clamp White



200W
POWER
HANDLING

HTX 8 M-CL-C
Marine Tower Coax 8"
Clamp Black



200W
POWER
HANDLING

HTX 8 M-FL-W
Marine Tower Coax 8"
Flat White



200W
POWER
HANDLING

HTX 8 M-FL-C
Marine Tower Coax 8"
Flat Black



HTX RGB W LOGO.1
Optional Rgb Led Lighting Rear
Logo White



HTX RGB C LOGO.1
Optional Rgb Led Lighting Rear
Logo Black



HM RGB 1 BK
Optional Rgb
Remote Control

The optional rear Hertz led logo creates the same sophisticated atmosphere of front led, adding tons of class to your vessel.



POWER
FOR THE
WAVES
PURE MARINE
CERTIFIED PRODUCT

HIGH-PERFORMANCE SPEAKERS

HERTZ



HMX SPORT STYLE

Give your boat a more aggressive look with HMX sport style. Thanks to the combination of the open-sight cone and RGB LED option, it will be easy to create an impressive atmosphere for your boat party, ensuring an unforgettable time for your guests.



HM RGB 1 BK
Optional Rgb
Remote Control



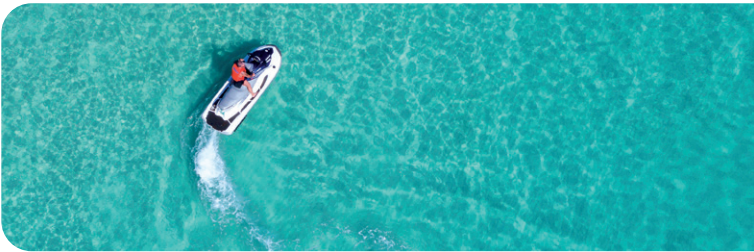
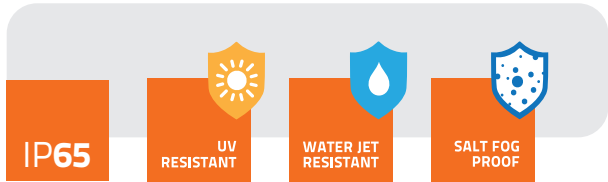
200W
POWER
HANDLING

HMX 8 S
8" Marine Coax Sport
HMX 8 S-LD
Rgb Leds 8" Marine
Coax Sport



150W
POWER
HANDLING

HMX 6.5 S
6.5" Marine Coax Sport
HMX 6.5 S-LD
Rgb Leds 6.5" Marine
Coax Sport



POWER
FOR THE **WAVES**
PURE MARINE
CERTIFIED PRODUCT



COAXIAL SPEAKERS



SPORT

HEX

PREMIUM QUALITY AND COOL STYLING,
THIS IS HEX LINE

Available with 3 option grilles, **SPORT**, **MARINE** and **CLASSIC**,
HEX coaxial always provide the perfect style for your boat, giving
you years of pure fun while cruising, being over engineered and
tested for Marine applications.

The compact 6.5" speaker, with a depth of only 2.36 in. delivers a
detailed and dynamic sound, making every outing memorable.



MARINE

CLASSIC

COAXIAL SPEAKERS

HERTZ



PAINTABLE SPORT GRILLE

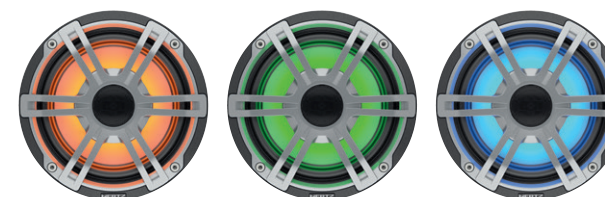
HEX sport grille can be easily
removed to be painted with a
custom color perfect for your boat.

*This picture shows some examples of
custom color combinations.*

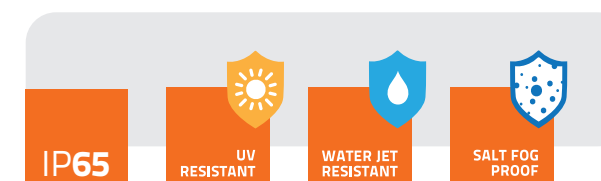


LED LIGHTING

The built-in leds create a unique feeling on board
to give the right atmosphere to your venues.



HM RGB 1 BK
Optional Rgb
Remote Control



COAXIAL SPEAKERS

HERTZ



100W
POWER
HANDLING

HERX 6.5 M-W
6.5" Marine Coax White



100W
POWER
HANDLING

HERX 6.5 M-C
6.5" Marine Coax Black



100W
POWER
HANDLING

HERX 6.5 C-W
6.5" Marine Coax Classic



100W
POWER
HANDLING

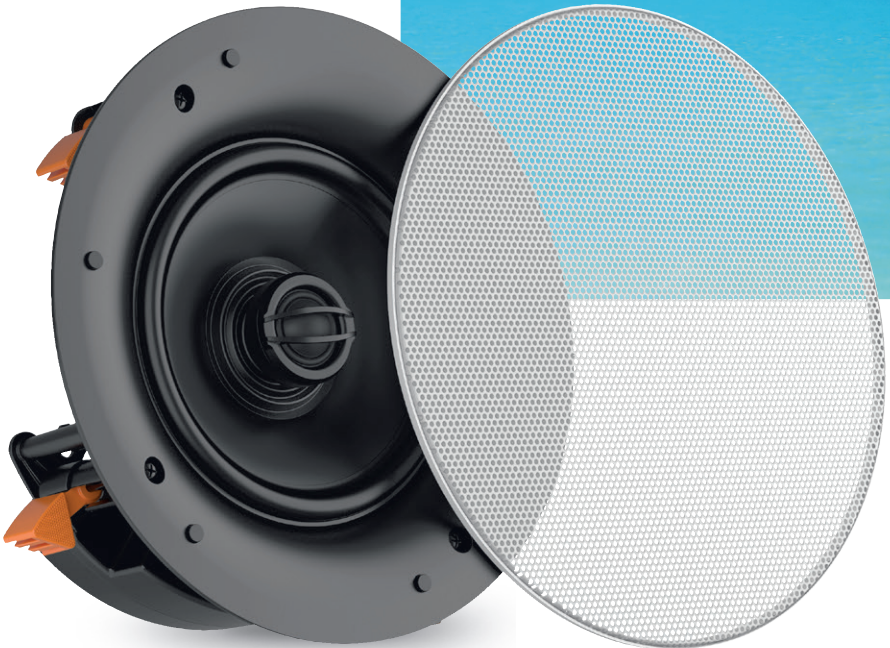
HERX 6.5 S-LD-G
6.5" Marine Coax Sport



- Hertz **Pure Marine Certified Product** stamp featuring the IP65 protection grade, ASTM-D4329 standards for UV resistance and ASTM-B117 for salt fog operability.
- Edgeless mesh grille with magnetic locking system designed to disappear from view.
- Sealed crossover filter made by marine-grade coded PCB to prevent corrosion against salt fog.
- Dedicated crossover designed to optimize sound emission for in-wall install.
- High efficiency tweeter designed with FEM simulation to maximize sound projection for in-wall and in-ceiling installation.
- Woofer with 25 mm (1") voice coil and 6 Ω impedance, optimized for any amplifiers system.
- Silicone insulated lead wires for extended durability in outdoor application.
- Fast and easy installation thanks to the robust hooking system.

POWER
FOR THE WAVES
PURE MARINE
CERTIFIED PRODUCT

COAXIAL SPEAKERS



100W
POWER
HANDLING

HERX 6.5 IC-W
6.5" Marine Coax
In-Ceiling



HEX IN-CEILING

Hertz marine In-Ceiling speaker is designed to deliver thrilling sound with a near stealth installation. Engineered to be incredibly durable, they are fine-tuned for in-wall positioning providing top audio performance from very discreet designs. This includes an advanced crossover built with marine conformal coated PCB encapsulated in a sealed enclosure to prevent corrosion.

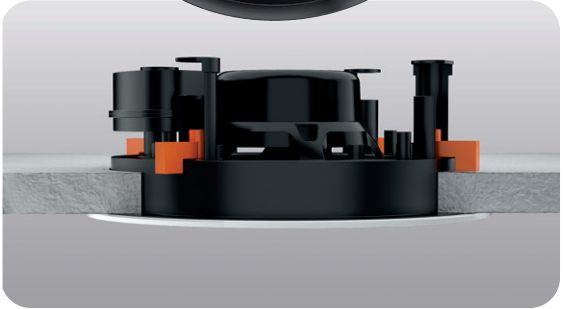
- Hertz **Pure Marine Certified Product** stamp featuring the IP65 protection grade, ASTM-D4329 standards for UV resistance and ASTM-B117 for salt fog operability.
- Edgeless mesh grille with magnetic locking system designed to disappear from view.
- Sealed crossover filter made by marine-grade coded PCB to prevent corrosion against salt fog.
- Dedicated crossover designed to optimize sound emission for in-wall install.
- High efficiency tweeter designed with FEM simulation to maximize sound projection for in-wall and in-ceiling installation.
- Woofer with 25 mm (1") voice coil and 6 Ω impedance, optimized for any amplifiers system.
- Silicone insulated lead wires for extended durability in outdoor application.
- Fast and easy installation thanks to the robust hooking system.

IP65

UV
RESISTANT

WATER JET
RESISTANT

SALT FOG
PROOF



POWER
FOR THE **WAVES**
PURE MARINE
CERTIFIED PRODUCT



HIGH-PERFORMANCE SUBWOOFERS



HMS

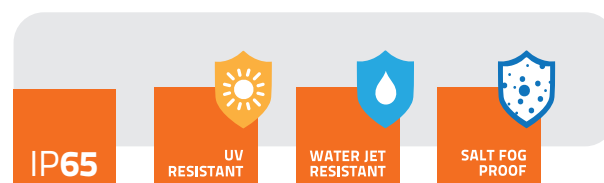
HERTZ MARINE SUBWOOFERS
WILL BRING YOUR PARTY TO
THE NEXT LEVEL !

Available with sport or marine grille option, HMS subwoofers are designed to be installed without the need for a dedicated enclosure delivering powerful and precise bass in any vessel.

Sport grille, featuring built-in leds, can be easily removed to be painted with the perfect color for your vessel.

The motor and suspension design are optimized for high-power, infinite-baffle operation featuring long linear excursion capability for tremendous output with low-distortion.

Hertz Marine subwoofers not only add tons of bass output to your system but also relieve the main speakers from the hard work of reproducing the lowest frequency range, maximizing the overall system performance, **for unlimited sound pressure and emotion !**



HIGH-PERFORMANCE SUBWOOFERS

HERTZ



500W
POWER
HANDLING

HMS 10 B
10" Marine Subwoofer White
HMS 10 B-2
2 Ω 10" Marine Subwoofer White



500W
POWER
HANDLING

HMS 10 B-C
10" Marine Subwoofer Black
HMS 10 B-C2
2 Ω 10" Marine Subwoofer Black



500W
POWER
HANDLING

HMS 10 S-LD-G
10" Marine Subwoofer
HMS 10 S2-LD-G
2 Ω 10" Marine Subwoofer

- Hertz **Pure Marine Certified Product** stamp featuring the IP65 protection grade, ASTM-D4329 standards for UV resistance and ASTM-B117 for salt fog operability.
- Long-throw 50 mm (2") voice coil woofer engineered for infinite baffle application featuring polypropylene cone injected with UV inhibitors and co-molded Santoprene surround.
- Progressive-design aramid fiber spider with silicone-insulated lead wires ensuring durability and constant performance over time.
- High-excursion mobile equipment driven by a massive magnetic group encapsulated into a marine-grade polymer injected basket.
- Gold-plated corrosion resistant brass connection terminals with silicone cap protecting lead wire junction point.



POWER
FOR THE WAVES
PURE MARINE
CERTIFIED PRODUCT

HIGH-POWER AMPLIFIERS



1500W
D-CLASS
MAX POWER

HCP 5 MD
Five Channels Marine
Amplifier
HCP 5 MD 24V
24V Five Channels
Marine Amplifier

HCP M

With a compact design featuring conformal coated PCB, HCP M series are ready to face the open water environment, providing tons of clean power. The heat sink has been crafted from extruded aluminium, a material unmatched for lightness, robustness and heat dissipation. To keep size to a minimum, the power transistors are placed between the PCB and the top side of the heat sink where heat is gathered. Built up heat is then directed to the special dissipation "wings" along the side of the amplifier. The complete crossover filters with variable frequency and the bridge operation mode improve application versatility for the design of ultimate active systems in your vessel.

- Hertz **Pure Marine Certified Product** stamp featuring the IP64 protection grade, ASTM-D4329 standards for UV resistance and ASTM-B117 for salt fog operability.
- Compact design built from extruded aluminum heatsink with top side ensuring effective heat transfer.
- Power supply featuring multiple winding transformer, Low-ESR 105°C capacitors, 2 Ω stable output stage.
- Complete crossover filters providing a greater application versatility for the design of active systems.
- Bridge operation mode to drive a subwoofer or to create a powerful dual-mono system.
- Bass Boost adjustable via selector, for more punch from speakers.
- Special balanced input circuitry to reject electro-magnetic disturbances.
- Hi-Level and lo-level inputs to be compatible with any source.
- Short-circuit and thermal protections with auto resetting.



HRC
Hertz Remote Control
Optional for
HCP 5MD / HCP 5MD 24V



800W
AB-CLASS
MAX POWER

HCP 2MX
Two Channels
Marine Amplifier



760W
AB-CLASS
MAX POWER

HCP 4M
Four Channels
Marine Amplifier



POWER
FOR THE WAVES
PURE MARINE
CERTIFIED PRODUCT

HIGH-POWER AMPLIFIERS

HERTZ



600W
D-CLASS
MAX POWER

HMP 4D
Four Channels Marine
Amplifier

HMP

The compact HMP amplifiers with a cast-aluminium IP64 chassis, are the ideal choice for adding multi-zone audio to your boat. Class-D technology maximizes efficiency ensuring an incredible power to size ratio and low battery drain. The complete integrated crossover and the bridge operation mode improve versatility to satisfy every installation need.

- Hertz **Pure Marine Certified Product** stamp featuring the IP64 protection grade, ASTM-D4329 standards for UV resistance and ASTM-B117 for salt fog operability.
- HRC BM (Hertz Remote Control Bass Management) included.
- Bass Boost adjustable via selector, for more punch from speakers.
- Complete crossover filters allowing for easy setup and system flexibility.
- Hi-Level and lo-level inputs to be compatible with any source.
- Special balanced input circuitry to reject electro-magnetic disturbances.
- Short-circuit and thermal protections with auto resetting.

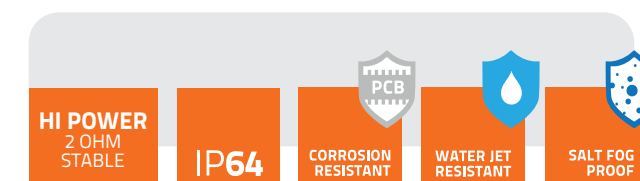


HRC BM
Hertz Remote Control Bass
Management
Included for HMP 1D



600W
D-CLASS
MAX POWER

HMP 1D
Mono Marine
Amplifier





HMC D1 REMOTE CONTROL
HMC D1 provides the ability to replicate every function of the HMR 50 main unit, creating up to 3 independently controlled listening areas.
Optional for HMR 50



HMC U1 REMOTE CONTROL
Play your favorite song and pump-up the volume while swimming in open water. Thanks to IPX7 certification you can install HMC U1 remote controll anywhere on the boat.
Optional for HMR 50, HMR 20, HMR 10 D, HMR 10



HMB NMEA2000
NMEA 2000 external module allows Hertz marine source units to be integrated with the boat's onboard NMEA 2000 network, enabling control of Hertz source units directly from the boat's Multi-Function Display (MFD) device.
Optional for HMR 50



HMB DAB+
This module add DAB+ DIGITAL RADIO capability to Hertz Marine Source.
Provided with dedicated antenna.
Optional for HMR 50, HMR 20



HM RGB 1 BK WIRELESS RGB REMOTE CONTROL
HM RGB 1 BK includes an RGB CONTROLLER specifically developed for LEDs option models and a radio frequency remote control with a wide array of functionalities ranging from color selection to the tempo lighting games activation.
Optional for speakers with RGB leds option (LD)



HMA USB AUX IN
Extension cable water proof 2 mt.
Optional for HMR 50, HMR 20, HMR 10 D, HMR 10



HMA C1306
13 pin remote controller extension cable 6 mt.
Optional for HMR 50



HMA C13Y
13 pin y cable.
Optional for HMR 50



HMA C3.5
3.5 jack extension cable 10 mt.
Optional for HMR 50, HMR 20, HMR 10 D, HMR 10



HMA C3.5Y
3.5 jack y cable.
Optional for HMR 50, HMR 20, HMR 10 D, HMR 10

MARINE GRADE SOURCE UNITS





SPECIFICATIONS	HMR 50	HMR 20	HMR 10 - HMR 10 D
DISPLAY	3.5" COLOR TFT IPS	3" COLOR TFT IPS	2.8" DOT Matrix display
PEAK POWER @ 4 Ω	4 x 50 W	4 x 50 W	4 x 50 W
FRONT PANEL IPX RATING	IP66	IP66	IP66
MULTI-ZONE	3	2	-
LINE OUT	3 (1 x L + R per zone)	2 (1 x L + R per zone)	2 (F + R)
SUBWOOFER OUT	1 (Low Pass 60-80-100 Hz)	1 (Low Pass 60-80-100 Hz)	-
AUX INPUT	1 x L + R	1 x L + R	1 x L + R
EQUALIZER	CUSTOM 8 BANDS	4 PRESET	3 PRESET
CAMERA IN	Yes	-	-
BATTERY VOLTAGE GAUGE	Yes	Yes	-
SOURCES			
TUNER	AM/FM with RDS (where available)	AM/FM with RDS (where available)	AM/FM – Only HMR 10D with RDS (where available)
USB	Yes	Yes	Yes
IPOD/IPHONE	Yes	-	-
DAB+ READY	Yes	Yes	Only HMR 10 D
SIRIUSXM READY	Yes	-	-
NMEA 2000 READY	Yes	-	-
BLUETOOTH	4.2	4.2	2.1
	Audio streaming with ID3 Tag Display	Audio streaming with ID3 Tag Display	Audio streaming
	APTX (CD AUDIO QUALITY)	-	-
	REMOTE APP CONTROLL	-	-
SIZE & MOUNTING			
Unit Size mm (in.)	W 146 (5.748) x H 105 (4.134) x D 121 (4.763)	W 146 (5.748) x H 105 (4.134) x D 121 (4.763)	Diameter 113 (4.45)
Mounting Hole size mm (in.)	W 122 (4.8) x H 52 (2.05)	W 122 (4.8) x H 52 (2.05)	W 92 (3.62) x H 70 (2.75)
Mounting Depth mm (in.)	99 (3.89)	99 (3.89)	70 (2.75)
Mounting Method	Screw	Screws	U-Bracket





HIGH-PERFORMANCE
SPEAKERS

HMX SERIES



COAX specifications		 HMX 6.5 (C/LD/S)		 HMX 8 (C/LD/S)	
Size mm (in.)	Woofers	165 (6.5)		200 (8)	
	Tweeters	36 (1.4)		36 (1.4)	
	Mounting	69 (2.72)		91 (3.58)	
Power Hand. W	Peak	150		200	
	Cont.	75		100	
Imp.Ω		4		4	
Freq. Resp.Hz		50 - 25 K		45 - 25 K	
Sens. dB/SPL		89		91	
Magnet WF/TW		High density flux ferrite / Neodymium		High density flux ferrite / Neodymium	
Woofers Cone / Tweeters Dome		Polypropylene / PEI		Polypropylene / PEI	

HEX SERIES

COAX specifications		 HEX 6.5 (M-C/M-W/S)		 HEX 6.5 (CL-W/IC-W)	
Size mm (in.)	Woofers	165 (6.5)		165 (6.5)	
	Tweeters	24 (0.9)		24 (0.9)	
	Mounting	61,7 (2.43)		61,5 (2.42)	
Power Hand. W	Peak	100		100	
	Cont.	100		50	
Imp.Ω		4		4 (6 IC-W only)	
Freq. Resp.Hz		50 - 23 K		50 - 23 K	
Sens. dB/SPL		88		88	
Magnet WF/TW		High density flux ferrite / Neodymium		High density flux ferrite / Neodymium	
Woofers Cone / Tweeters Dome		Polypropylene / PEI		Polypropylene / PEI	



PREMIUM CLASS TOWER

HTX SERIES

COAX specifications		 HTX 8 M-CL-C/W		 HTX 8 M-FL-W/C	
Size mm (in.)	Woofers	200 (8)		200 (8)	
	Tweeters	36 (1.4)		36 (1.4)	
	Min. Mounting Height clamp/flat	325 (12.8) / 237 (9.3)		325 (12.8) / 237 (9.3)	
Power Hand. W	Peak	200		200	
	Cont.	100		100	
Imp.Ω		4		4	
Freq. Resp.Hz		45 - 25 K		45 - 25 K	
Sens. dB/SPL		91		91	
Magnet WF/TW		High density flux ferrite / Neodymium		High density flux ferrite / Neodymium	
Woofers Cone / Tweeters Dome		Polypropylene with UV inhibitors / PEI		Polypropylene with UV inhibitors / PEI	

MARINE SUBWOOFERS


HMS SERIES

SUB specifications		 HMS 10 B/B-C		 HMS 10 S	
Size mm (in.)		250 (10)			
Mounting		145 (5.71)			
Power Hand. W	Peak	500			
	Cont. program	250			
Imp.Ω		4 (2 C2/S2)			
Sens. dB/SPL		88 (88,5 C2)			
Application		Infinite baffle			
Magnet		High density flux ferrite			
Cone		Polypropylene with UV inhibitors			

HIGH-POWER AMPLIFIERS

AMP specifications		 HMD8 DSP - HMD8 DSP 24V	
Channel Mode		8 - 4	
Output Power (RMS) @ 14.4 VDC	@ 4Ω	W x ch	85 x 8
	@ 2Ω	W x ch	130 x 8
	@ 4Ω	W x ch (4 ch)	260 x 4
Distortion - THD	1 kHz @ 4Ω, 2 VRMS	%	0,06
S/N Ratio	Sensitivity @ 1 V RMS	dBA	105
Damping factor	1 kHz @ 4Ω		110
Size W x D x H		mm	243 x 48 x 159
		in.	9.56 x 1.89 x 6.2

DSP specifications	
Filter type	Full / Hi pass / Low Pass / Band Pass
Filter mode and slope (dB/oct)	Butterworth (6, 12, 18, 24, 30, 36, 42, 48, 54, 60)
	Linkwitz-Riley (12, 24, 36, 48, 60 dB/oct)
	Bessel (6, 12, 18, 24, 30, 36, 42, 48, 54, 60)
	Chebyshev (6, 12, 18, 24, 30, 36, 42, 48, 54, 60)
	QLP quasi-linear phase (6, 12)
Crossover frequency Hz	20 ÷ 20k integer values
Phase control	0° / 180°, all pass equalizer poles
Graphic and Parameter	n. 10 parametric poles (Peaking, High Shelf, Low Shelf, Notch, All pass) ±12 dB gain, variable Q (0.5 - 16.0)
Equalizer	0 ÷ 510 cm / 0 ÷ 200.8 in.
Time Alignment Distance	0 ÷ 15 ms
Time Alignment Delay	1cm / 0.39 in.
Time Alignment Step	1 sample
Time Alignment Fine SET	n. 2 memories
Memories	n. 3 parametric poles for each memory (Peaking, High Shelf, Low Shelf) ±12 dB gain, variable Q (0.5 - 16.0)
Preset (Drive Preset)	Rotary switch for 7 installation Presets

AMP specifications		 HMD1 - HMD1 24V	
Channel Mode		1	
Output Power (RMS) @ 14.4 VDC	@ 4Ω	W x ch	500
	@ 2Ω	W x ch	800
Distortion - THD	1 kHz @ 4Ω, 2 VRMS	%	0.1%
S/N Ratio	Sensitivity @ 1 V RMS	dBA	101
Damping factor	1 kHz @ 4Ω		120
Size W x D x H		mm	243 x 48 x 159
		in.	9.56 x 1.89 x 6.2

HIGH-POWER AMPLIFIERS



HCP M SERIES

AMP specifications			HCP 2MX	HCP 4M	HCP 5MD - HCP 5MD 24 V
Channel Mode			2 - 1	4 - 3 - 2	5 - 3
Output Power (RMS) @ 14.4 VDC	@ 4Ω	W x ch	120 x 2	65 x 4	65 x 4 + 200 x 1
	@ 2Ω	W x ch	200 x 2	95 x 4	105 x 4 + 330 x 1
	@ 4Ω	W x ch (3 ch)	-	65 x 2 + 190 x 1	210 x 2 + 200 x 1
	@ 2Ω + 4Ω	W x ch (3 ch)	-	95 x 2 + 190 x 1	-
	@ 4Ω + 2Ω	W x ch (3 ch)	-	-	210 x 2 + 330 x 1
	@ 4Ω	W x ch (2 ch)	-	190 x 2	-
	@ 4Ω	W x ch (mono)	400 x 1	-	-
Filters	Bypass		Yes	Yes	Yes
	Hi-Pass	Hz @ dB/Oct.	50 ÷ 3,2k @ 12	A/B: 80 @ 12	A: 50 ÷ 5k @ 12 B: 50 ÷ 5k @ 12
	Band-Pass	Hz @ dB/Oct.	-	-	B: 50 ÷ 500 @ 12 B: 50 ÷ 5k @ 12
	Lo-Pass	Hz @ dB/Oct.	50 ÷ 3,2k @ 12	A/B: 50 ÷ 500 @ 12	C: 50 ÷ 500 @ 24
Boost	dB	gain @ 50 Hz	off / +3 / +6 dB	off / +6 / +12 dB	0 ÷ 12 dB
HRC (Hertz Remote Control)		(-50 ÷ 6) dB	-	-	Optional
Pre-Out	Bypass		Yes	Yes	No
	Hi-Pass		50 ÷ 3,2k @ 12	-	-
	Lo-Pass		50 ÷ 3,2k @ 12	-	-
Distortion - THD	100 Hz @ 4Ω	%	0,03	0,01	0,02
S/N Ratio	Sensitivity @ 1 V RMS	dBa	105	103	100
Damping factor	100 Hz @ 4Ω		300	120	A/B: 100 - C: 250
Size W x D x H		mm	315 x 190 x 50	315 x 190 x 50	345 x 190 x 50
		in.	12.40 x 7.48 x 1.97	12.40 x 7.48 x 1.97	13.58 x 7.48 x 1.97



HMP SERIES

AMP specifications			HMP 1D	HMP 4D
Channel Mode			1	4 - 3 - 2
Output Power (RMS) @ 14.4 VDC	@ 4Ω	W x ch	180 x 1	60 x 4
	@ 2Ω	W x ch	300 x 1	75 x 4
	@ 4Ω	W x ch	-	60 x 2 + 150 x 1 (4Ω)
	@ 2Ω	W x ch	-	75 x 2 + 150 x 1 (4Ω)
	@ 4Ω	W x ch (2 ch)	-	150 x 2
Filters	Bypass		yes	yes
	Hi-Pass	Hz @ dB/Oct.	-	65 / 85 / 115 @ 12
	Lo-Pass	Hz @ dB/Oct.	65 / 85 / 115 @ 12	65 / 85 / 115 @ 12
Subsonic	Hi-Pass	Hz @ dB/Oct.	off / 22 / 32 @ 12	-
Boost	dB	gain @ 45 Hz	off / +6 / +9 dB	-
HRC BM (Hertz Remote Control Bass Management)		(-50 ÷ 6) dB	Included	-
Distortion - THD	100 Hz @ 4Ω	%	0,1	0,2
S/N Ratio	Sensitivity @ 1 V RMS	dBa	105	95
Damping factor	1 kHz @ 4Ω		300	45
Size W x D x H		mm	223 x 100.5 x 43.6	223 x 100.5 x 43.6
		in.	8.77 x 3.95 x 1.71	8.77 x 3.95 x 1.71

POWER
FOR THE **WAVES**
PURE MARINE
CERTIFIED PRODUCT





2020

YOUR LOCAL HERTZ RETAILER IS:



www.hertzaudiovideo.com

The images contained herein are courtesy of boat manufacturers who install Hertz Marine products.

The Bluetooth® word mark and logos are registered trademarks owned by Bluetooth SIG, Inc. and any use of such marks by Elettromedia srl is under license.

Sirius, XM and all related marks and logos are trademarks of Sirius XM Radio Inc. All rights Reserved.

All other trademarks are the property of their respective owners.

HERTZ

PART OF **ELETTROMEDIA** - 62018 Potenza Picena (MC) Italy - T +39 0733 870 870 - F +39 0733 870 880 - elettromedia.com